

North Somerset Council

Report to the Audit Committee

Date of Meeting: 24 November 2022

Subject of Report: Risk Management Strategy

Town or Parish: ALL

Officer/Member Presenting:

Emma Diakou, Head of Business Insight, Policy and Partnerships

Peter Cann, Head of Audit and Assurance

Key Decision: NO

Reason: This is a refresh of the North Somerset Council Risk Management Strategy.

Recommendations

That Audit Committee approve this refreshed Risk Management Strategy.

1. Summary of Report

The current Risk Management Strategy was jointly developed by North Somerset Council and Audit West and runs from 2019 to 2024. However, the Director of Corporate Services for North Somerset Council requested that the strategy be reviewed and refreshed ahead of schedule to ensure the following:

- That we have a clear vision and set of aims for how we manage risk.
- That we are clear on what our risk management approach is including our risk management framework.
- That we provide appropriate organisational-wide guidance on how to identify, analyse and control our risks.
- That we have assurance that risk is embedded within decision making and is appropriately reported and escalated where needed.

The Risk Management Strategy has now been refreshed with the detail provided in this report and the draft strategy given in full in Appendix 1.

2. Policy

North Somerset Council is legally required to have robust risk management arrangements in place. Those arrangements are intended to contribute to the good corporate governance of the organisation.

3. Details

The Risk Management Strategy has now been refreshed jointly by North Somerset Council and Audit West with changes as follows:

- A clear statement on our risk appetite.
- A new strategy vision, aims and approach.

- Alignment of the Risk Management Framework with best practice guidance from government.
- Clarity on how risk management links in to our Business Planning Framework.
- Updates to the analysis and control framework.
- Updates to the Risk Management Matrix to include impacts on people and on the themes in our Climate Emergency Strategy.
- Updates to risk monitoring and reporting to align with the Business Planning Framework reporting schedule.
- Clarification of risk governance so roles and responsibilities are clearer.

Alongside this Risk Management Strategy, a number of toolkits have been updated to support risk identification, analysis and control, and escalation.

Additionally, guidance on corporate decision making is being updated to provide additional information in report templates.

The strategy can be found in Appendix 1 of this report. Toolkit links are available as part of our Programme Management Office internally for staff as needed.

4. Consultation

The Director of Corporate Services has sponsored this strategy refresh.

Members of Audit Committee have been consulted on the updates to this strategy and given an opportunity to feedback.

Statutory Officers have been consulted on the updates to this strategy and given an opportunity to feedback.

5. Financial Implications

None from this report.

Costs

N/A

Funding

N/A

6. Legal Powers and Implications

The updated Risk Management Strategy will contribute to the good governance of the organisation. Updates to corporate decision making templates will ensure that the strategy is embedded in decision making and provide assurance that risk is being appropriately managed.

7. Climate Change and Environmental Implications

No specific implications from this report but possible climate impacts, aligned to the themes in the Climate Emergency Strategy, have now been included in the refreshed Risk Management Matrix to be used as part of any future risk analysis.

8. Risk Management

Not refreshing the Risk Management Strategy would put the good governance of the organisation at risk. Risk analysis shows this as a MEDHIGH inherent risk and treatment is to mitigate by refreshing the strategy and embedding across the organisation. Once refreshed the residual risk should fall to LOWMED at which point this risk can be accepted.

Theme	Risk	Lead officer	Inherent risk	Inherent risk treatment	Mitigating / exploiting actions	Residual risk	Risk treatment
Finance and resources (inc. staff)	Not refreshing the Risk Management Strategy will negatively impact the good governance of the organisation.	Amy Webb	MEDHIGH	Mitigate	Update the strategy.	LOWMED	Accept

9. Equality Implications

No specific implications from this report but possible impacts on residents and on staff are included in the refreshed Risk Management Matrix to be used as part of any future risk analysis.

10. Corporate Implications

North Somerset Council is legally required to have robust risk management arrangements in place. Those arrangements are intended to contribute to the good corporate governance of the organisation.

It is a requirement as part of the Business Planning Framework for all directorates to hold a risk register that is aligned to their business plan and considered at least quarterly by their Directorate Leadership Team.

A strategic risk register is held by Corporate Leadership Team and reviewed at least quarterly by Corporate Leadership Team, by Executive members, by Scrutiny Panels and by Audit Committee.

11. Options Considered

To not refresh the Risk Management Strategy might negatively impact on the good governance of the organisation.

Author:

Emma Diakou
Head of Business Insight, Policy and Partnerships
Corporate Services Directorate
North Somerset Council
emma.diakou@n-somerset.gov.uk

Background Papers:

- North Somerset Corporate Plan: [Organisational priorities | North Somerset Council \(n-somerset.gov.uk\)](#)
- North Somerset Council Risk Management Strategy 2019-2024.

Appendix 1: Risk Management Strategy

Cover page



Overview page: why we are doing this strategy and table of contents



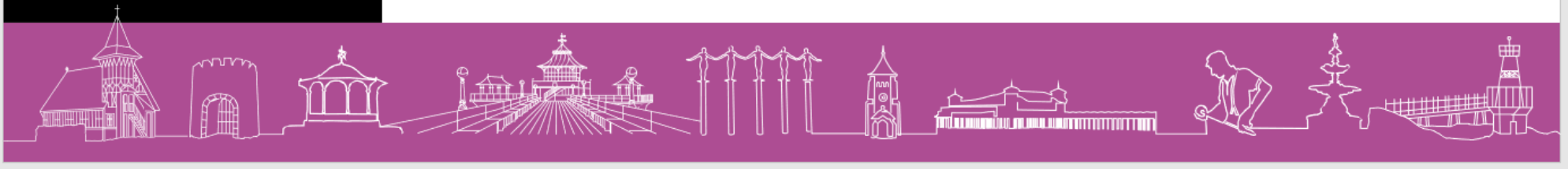
Overview

North Somerset Council is legally required to have robust risk management arrangements in place. Those arrangements are intended to contribute to the good corporate governance of the organisation and are outlined in this Risk Management Strategy. The strategy supports the delivery of our Corporate Plan vision to be *open, fair and green* and to contribute to our priorities to be:

- A thriving and sustainable place
- A council which empowers and cares about people
- An open and enabling organisation.

This strategy is updated annually in consultation with the council's [Audit Committee](#) and as part of our regular business planning framework.

- [North Somerset Corporate Plan](#)
- [Background and introduction to this strategy](#)
- [Understanding risk](#)
- [Strategy vision and aims](#)
- [Risk management framework](#)
- [Embedding the framework](#)
- [Governance](#)
- [Collaboration, information and continual improvement](#)
- [More information](#)



Link to Corporate Plan page: all strategies should reference the Corporate Plan:

The Corporate Plan

[Link to the Strategy](#)

[Link to the action plan and performance dashboard](#)

OUR VISION An open, fairer, greener North Somerset

Open

We will provide strong community leadership and work transparently with our residents, businesses and partners to deliver our ambition for North Somerset.

Fair

We aim to reduce inequalities and promote fairness and opportunity for everyone.

Green

We will lead our communities to protect and enhance our environment, tackle the climate emergency and drive sustainable development.

Our priorities

A thriving and sustainable place

- A great place for people to live, work and visit
- Welcoming, safe and clean neighbourhoods
- To be a carbon neutral council and area by 2030
- A transport network which promotes active, accessible and low carbon travel
- An attractive and vibrant place for business investment and sustainable growth
- A broad range of new homes to meet our growing need, with an emphasis on quality and affordability

A council which empowers and cares about people

- A commitment to protect the most vulnerable people in our communities
- An approach which enables young people and adults to lead independent and fulfilling lives
- A focus on tackling inequalities and improving outcomes
- Partnerships which enhance skills, learning and employment opportunities
- A collaborative way of working with partners and families to support children achieve their full potential

An open and enabling organisation

- Engage with and empower our communities
- Empower our staff and encourage continuous improvement and innovation
- Manage our resources and invest wisely
- Embrace new and emerging technology
- Make the best use of our data and information
- Provide professional, efficient and effective services
- Collaborate with partners to deliver the best outcomes

Our values

We act with
INTEGRITY

We
RESPECT
each other

We
INNOVATE

We
CARE

We
COLLABORATE



Background and introduction page: an overview of our risk position:

Background and introduction

We are living through a period of rapid change locally, nationally and across the world. In recent years we have declared a climate and biodiversity emergency, have managed through a global pandemic, and have entered a cost of living crisis. All of this has happened against a backdrop of a worsening financial position, not just for local government but the country as a whole.

The challenges North Somerset Council have faced have been unprecedented. We are seeing an increase in demand for our services, shifts in the demographic profile of our area contributing to that demand, an ever evolving digital landscape, and changing customer expectations. There is evidence that North Somerset continues to show inequality across the life course, with our residents living in more deprived areas having poorer life chances and worsening health and wellbeing outcomes.

However, we continue to be responsive and innovative to address these challenges. We have strengthened our partnerships with local businesses, voluntary organisations, town and parish councils and other public services like health. We have also seen community organisations flourish and become part of the service delivery landscape, offering innovative, trusted solutions to some of these challenges.

All of this means that the risk environment has changed, and we are seeing both an *increased* number of risks and a *change* in the type of risks. It is essential that we have a robust Risk Management Strategy in place, embedded throughout the organisation to manage these risks but also to manage any opportunities they might create.

It is also essential that we manage our risks in a transparent and informed way. We are accountable to our Corporate Leadership Team, our Executive Members, the Audit Committee and our residents for the way in which we implement risk management. We need to continue to demonstrate that we have a structured approach, which is embedded into our planning and reporting cycles and decision making processes at all levels.



Understanding risk page: understanding what we mean when we talk about risk (definitions):

Understanding risk

What do we mean when we talk about risk?

Every aspect of our work involves some level of risk. From policy making to financial management to the day to day delivery of services, risk is inherent in everything we do.

At the simplest level, risk is simply the uncertainty of something happening. That 'something' could be a negative threat or a positive opportunity. It becomes a risk if it is likely to have an impact on the achievement of our statutory services and Corporate Plan priorities either because the negative 'something' has not been managed or the positive opportunity was not taken advantage of.

Where are these risks?

Risks can be operational and/or strategic. Operational risks exist at service or team level and are generally related to the day-to-day work of that service or team. They can become a strategic risk when they are significantly impacting on the achievement of our Corporate Plan priorities and aims (significant based on the risk scoring). An example being that the finance team will manage a risk around achieving a balanced budget at year end as part of their business as usual work. This will become a strategic risk if there is a high likelihood that the budget will not be balanced and so impact on our priority to be 'an open and enabling organisation' and our aim to 'manage our resources and invest wisely', as well as our statutory responsibilities.

Why do we need to manage risks?

Being risk aware can help an organisation be more innovative and responsive. By managing risks we can ensure that we understand the risk type i.e. is it operational or strategic, the risk likelihood (how likely it is to happen), and the risk impact (what will happen if it does). We can also consider risk in the wider context of our vision – to be open, fair and green – linking in with our Climate Emergency and reducing inequalities commitments.

Good risk management means that we are actively managing any uncertainty and ensuring there are no surprises, ultimately this means good corporate planning and governance.



Managing risk in local government: gives our risk appetite:

Managing risk in local government

Councils are by their nature highly complex organisations, responsible for the delivery of hundreds of services for people and businesses across their defined area. Among them are well known functions such as social care, schools, transport, housing, planning and waste collection, but also lesser known ones such as licensing, business support, registrar services and pest control.

In North Somerset Council functions are provided across five directorates: Adults, Children's Services, Corporate Services, Place, and Public Health and Regulatory Services, the directors of which sit on our Corporate Leadership Team (CLT) with the Chief Executive.



The organisation's risk appetite is set at a strategic level by CLT and guides how much risk we are willing to seek or accept to achieve our objectives. Our risk appetite will change over time and will always be reflective of our current position in terms of ensuring we fulfil our statutory duties and that we work within our funding envelope. On that basis, we commit to being a risk aware rather than a risk averse organisation and agree that we should encourage managed risk taking at service level in order to work towards achieving our Corporate Plan aims and priorities. However, risks must be reflected in our operational risk registers so that Directorate Leadership Teams can analyse and control them where needed. We also note that the level of managed risk and the specific appetite for those risks will differ across directorates given the scope of services. So what might be an acceptable level of risk in Corporate Services might not be an acceptable level in Children's Services. Directors are required to make decisions for their services on what ongoing risk appetite is acceptable.



Strategy vision, aims and approach page: gives the vision, the aims and how we will implement these:

Strategy vision and aims

Our vision

The over-arching vision for this strategy:

Our Risk Management Strategy supports us to make honest, evidence-based decisions and realise opportunities through a good understanding of risks and their likely impact.

We are committed to being a risk aware rather than a risk averse organisation.

Our aims

The aims of this strategy are that...

- Risk management is well structured through an agreed framework of identifying risks to reporting them.
- Risk management is embedded in our organisational activities to support decision-making.
- Risk management is well managed through a robust governance structure.
- Risk management is collaborative, is informed by the best available information, and is continually improved through learning and experience.

Our approach

We will achieve these aims by...

- Having a robust and consistent risk management framework including an agreed risk management matrix.
- Establishing clear roles, responsibilities and reporting lines within the council for risk management.
- Providing a risk management toolkit and detailed guidance to use that toolkit.
- Communicating risk information effectively through our quarterly business planning and performance framework.
- Independently monitoring the arrangements in place for risk management on a regular basis.



Risk management Framework page: gives the first aim and how we will achieve it (risk management framework):

Risk management framework

Our aim: The risk management processes is well structured through an agreed framework

Our risk management framework is structured in line with best practice guidance from [HM Treasury](#). It includes risk identification, risk analysis and control, and risk monitoring and reporting.



- **Risk identification:** the process to understand the scope of risk across the organisation and where those risks are held. Risk identification should be part of the wider business planning and performance framework of the organisation so that risk management is embedded within our service delivery.
- **Risk analysis and control:** the process to understand the type of risks, the severity of them, and how they will be treated. This step in the framework is essential to ensure that risk is managed in a consistent way across the organisation and that we are comparing like for like.
- **Risk monitoring and reporting:** the process by which risks are monitored and reported in an integrated, timely and accurate way. This is essential to ensure we have strong corporate governance.



Risk identification page: continues with the first aim and how we will achieve it (risk identification):

Risk identification

Risk exists at all levels in the organisation, from day to day service activity (operational) through to the business of the Corporate Leadership Team (strategic). The identification of risk – whether operational or strategic – is built into the council's Business Planning and Performance Management Framework.

This framework aims to monitor progress against our Corporate Plan priorities. We do this on an annual basis by developing, implementing and monitoring Annual Directorate Statements which are then reviewed and reported quarterly. These are the business plans for each of the council's five directorates and give their key strategic commitments for the year ahead. Services build their Service Strategies, their Team Plans and undertake their appraisals on the basis of the commitments made in the Annual Directorate Statements. This is the organisational '**golden thread**' and ensures that all staff are working towards the same goals.

Alongside the development of the Annual Directorate Statements, directorates also identify any risks which might challenge achievement of those commitments. These risks are themed based on whether they are impacting finance and resources, transformational activity, the climate emergency, residents and communities, or corporate governance. These risks and the themes then become the risk registers for each directorate. Any operational risks are picked up to be managed by teams and are used to feed service or project specific risk registers, which in turn may escalate back up into the directorate level risk register. Strategic risks are identified following a cross-directorate analysis, and these then feed into the council's Strategic Risk Register. All risks are reviewed **quarterly** and any newly identified risks folded into the appropriate risk register.

This approach ensures that we have integrated risk management into all levels of our business planning framework, and ultimately how we run our services.



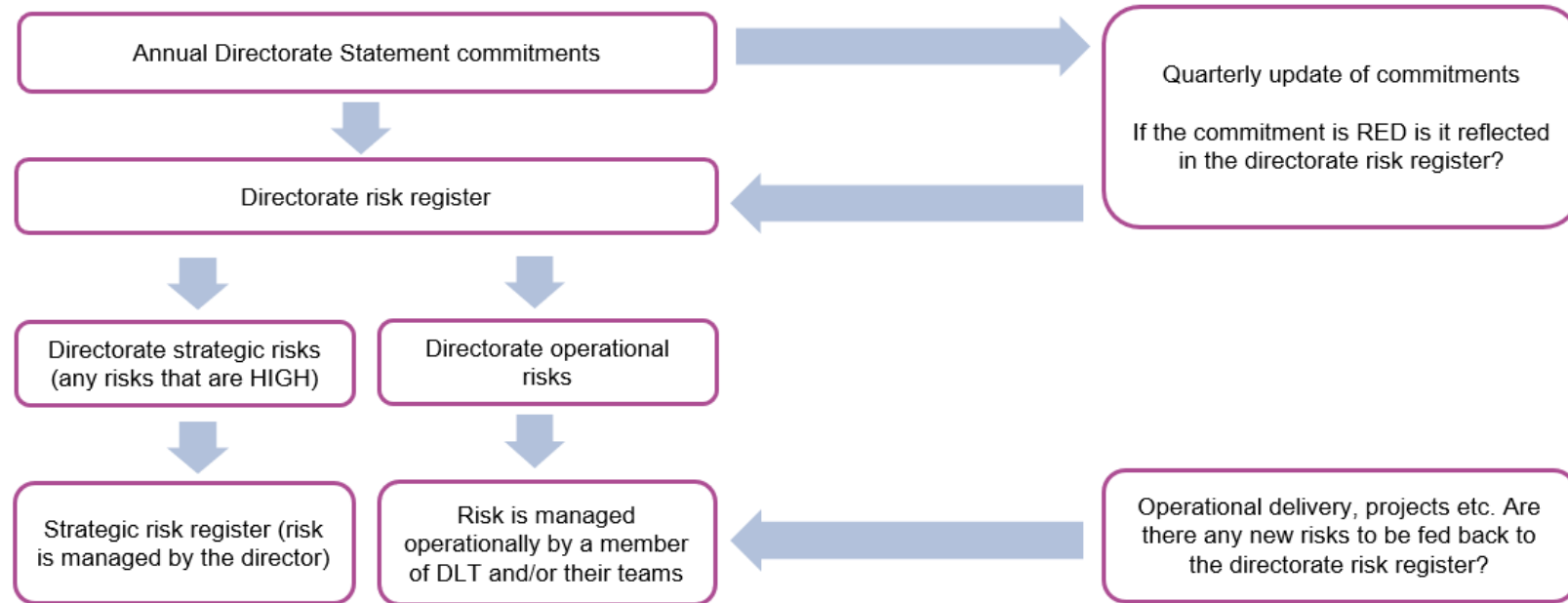
Risk identification flow page: continues with the first aim and how we will achieve it (risk identification)

Risk identification: process flow

Risk identification can be summarised in this process flow diagram:

Initial identification of risks:

Ongoing quarterly identification of risks:



Risk assessment page: continues with the first aim and how we will achieve it (risk analysis and control)

Risk assessment: analysis and control

Once risks have been identified they need to be assessed to understand the likelihood and the impact of the risk, this is an essential part of the risk management framework, and is done following a three-step process and using the standard risk management matrix.

Step one: inherent risk

This is the first assessment of the risk and is meant to understand the risk if no action is taken to manage it. The risk is scored on the likelihood of it happening and then the impact if it does happen. The impact should be considered based on the same factors used to theme the risks:

- Finance and resources(inc. impact on staff)
- Transformational activity
- The climate emergency
- Residents and communities (inc. reputational impact, equalities)
- Corporate governance

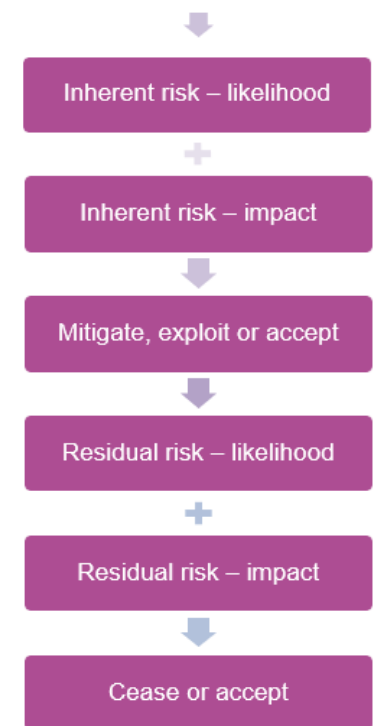
Step two: action

If the first assessment of the inherent risk shows that it is unlikely to happen and/or will have little impact then there will usually be no need to take any action to manage the risk and it can simply be accepted. However, if the assessment shows it is likely to happen and/or will have an impact then officers should seek to identify if there are actions that can be put in place to mitigate it, or in the case of an opportunity, to exploit it.

Step three: residual risk

This is the second assessment of the risk and is meant to re-evaluate the risk, taking into consideration the effectiveness of any identified actions. Once again, the risk is scored on likelihood and impact. However, at this point it may be that the analysis and second assessment show that the risk cannot be managed and in this case the activity that the risk is related to will either need to be ceased or the risk itself will simply will need to be accepted if that activity continues.

Analysis and control flow method



Risk assessment page: continues with the first aim and how we will achieve it (risk management matrix)

Risk analysis and control: risk management matrix

This standard risk management matrix is used to ensure there is consistency in scoring of risks across the organisation. It is based on a scoring system which - when combined across likelihood and impact - calculates a RAG rating for each risk as either LOW, LOWMEDIUM, MEDIUM, MEDIUMHIGH or HIGH. Risks that score LOW or LOWMEDIUM at first assessment (inherent risk) will usually not need to be mitigated or exploited or even given a second assessment to determine the residual risk. Risks that score MEDIUM, MEDIUMHIGH or HIGH will need to be mitigated or exploited and re-assessed.

Please use the guidance in the impact section ↓

		Likelihood				
		Rare – less than a 5% chance	Unlikely – 6% to 20% chance	Possible – 21% to 50% chance	Likely – 51% to 80% chance	Almost certain – 80% plus
Impact ↑	Critical – a major loss to a service including disruption of more than five days with significant impact on staff, a complete failure of project, affecting more than 25% of a budget, litigation/claims/fines of £1m plus, not meeting our legal duties and putting at risk individuals at risk, impacting residents across several wards, impacting on several themes in the Climate Emergency Strategy.	LOWMED	MEDIUM	HIGH	HIGH	HIGH
	High – service disruption of three to five days with high impact on staff, extreme delay to a project, affecting 16% to 25% of a budget, litigation/claims/fines of up to £500k, significant impact for at risk individuals, impact on residents across one or more wards, impact on at least two of the thematic areas in the Climate Emergency Strategy.	LOW	MEDIUM	MEDIUMHIGH	HIGH	HIGH
	Medium – service disruption two to three days with some impact on staff, impact on a project a failure of benefits, affecting 6% to 15% of a budget, litigation/claims/fines of up to £250k, there are some safeguarding and duty of care impacts, there are some impacts on residents, impacts on at least one of the thematic areas in the Climate Emergency Strategy.	LOW	LOWMED	MEDIUM	MEDIUMHIGH	HIGH
	Low – minimal service disruption with minimal impact of staff, minimal impact to a project, affecting 1% to 5% of a budget, litigation/claims/fines of up to £100k, consideration to be given to safeguarding and duty of care impacts, consideration given to number of residents affected, minimal impact to the thematic areas in the Climate Emergency Strategy.	LOW	LOWMED	LOWMED	MEDIUM	MEDIUM
	Negligible – little service disruption with little impact of staff, minimal impact to a project, affecting up to 1% of a budget, litigation/claims/fines of up to £50k, minimal or no safeguarding and duty of care impacts, not impacting any residents, not impacting any of the thematic areas in the Climate Emergency Strategy.	LOW	LOW	LOW	LOWMED	LOWMED

Risk monitoring and reporting page: continues with the first aim and how we will achieve it (risk reporting)

Risk monitoring and reporting

Risk monitoring and reporting forms part of the quarterly Business Planning and Performance Management cycle which is led by the council's Business Intelligence Service. It follows a structured process from service level monitoring through to reporting to the public.

1. Risks are monitored in the first instance at service level where the lead officer scores the risk using the scoring matrix and associated guidance. These scores are then reported to the Business Intelligence Service.
2. BIS reviews all risk scores and challenges where necessary before reporting via the quarterly Integrated Performance Management dashboard to the Directorate Leadership Team.
3. All members of the DLT including the director review the risks on an exception basis (MEDHIGH or HIGH) to satisfy themselves that the risk is being controlled appropriately and if not to request more detail or adjust their scores.
4. Risks are then reviewed at Corporate Leadership Team also on an exception basis (MEDHIGH or HIGH) who undertake the same process on the Strategic Risk Register.
5. For each directorate quarterly monitoring sessions are held with the Leader of the council, the Chief Executive, the Executive Member, the Director, and the Head of Business Insight, Policy and Partnerships to review all Annual Directorate Statement Commitments and all Directorate Risk Registers.
6. The Audit Committee is also updated on quarterly basis where the Directorate and Strategic Risk Registers are discussed at committee.
7. All Scrutiny Panels receive a risk register update before the information is then published as part of the public [Corporate Plan data dashboard](#) available on our website.

At the end of this any newly identified risks or adjusted risks are folded into the next quarter's process.

Reporting and monitoring flow diagram



Embedding the Framework page: gives the second aim and how we will achieve it (embedding the framework)

Embedding the framework

The risk management processes is embedded in our organisational activities to support decision-making

This Risk Management Strategy builds upon the previous strategy but now embeds risk management within our Business Planning and Performance framework, this ensures a clear link between our Corporate Plan and how we identify, manage and report risks. Alongside this the Risk Management Strategy is strongly embedded in decision making across the organisation to ensure that:

- Officers undertake a risk assessment on any proposal they are making using the standard risk management matrix.
- Officers ensure they have reviewed their proposal against their Directorate Leadership and Strategic Risk Registers – will the proposal impact on any of these risks i.e. will it help mitigate it?
- Where the risk assessment shows risks that are MEDHIGH to HIGH (either at inherent or residual stage) they are always reported as part of the overall proposal including any mitigating actions.
- Decision makers are able to review the proposal and be satisfied that it has been subject to a robust risk assessment.

Together these steps ensure that the decision making process has had effective scrutiny either at officer or at member level and there is strong assurance that the decision has been properly considered.

Decision making flow diagram



Embedding the Framework page: continues the second aim and how we will achieve it (embedding the framework)

Embedding the framework cont...

To support embedding risk in our decision making:

- **Corporate decision making:** Executive, Committee and Corporate Leadership Team report templates include a section on 'Risk Management'. The section requires the report author to undertake a risk assessment using the 'decision making flow diagram'. Links are included in the report guidance to access the matrix and DLT and Strategic risk registers.
- **Financial planning:** the standard risk management matrix is used across Medium-Term Financial Planning to ensure consistency of risk scoring across budget planning. Finance specific risk registers are held and managed by the Finance Service.
- **Project management:** the Programme Management Office (PMO) requires that all transformation and capital projects hold a risk register which considers the risks to delivering the project outcomes before and throughout the project.
- **Partnership working:** the Policy and Partnerships team holds and manages a risk register analysing threats and opportunities that may impact our partnerships objectives.
- **Climate emergency:** the Climate Emergency project manager holds and manages a risk register analysing threats and opportunities that may impact our achievement of being a net zero council and area by 2030.
- **Procurement:** contract standing orders clearly specify that all risks and actions associated with the purchase need to be identified and assessed, kept under review and amended as necessary during the procurement process.
- **Contract management:** all significant risks associated with all stages of contract management are identified and kept under review in line with this Risk Management Strategy.
- **Information governance:** a risk register is held by the ICT Architecture Board to assess the level of risk and compliance on the use of information.
- **IT:** a risk register is held by Agilisys and reported to the ICT Architecture Board to assess the level of risk and compliance around IT systems and performance.
- **Insurance:** the council's Insurance team manages insurable risks and self-insurance arrangements.
- **Health and Safety:** the council has a specific risk assessment policy to be followed in relation to health and safety risks.

Individual services will also hold their own risk registers where appropriate.



Governance page: gives the third aim and how we will achieve it (governance and line of defence)

Governance

The risk management processes is well managed through a robust governance structure

To ensure risk management is effectively implemented, all officers and members should have a level of understanding of the Council's Risk Management Strategy and regard risk management as part of their responsibilities. Alongside this some officers and members will have specific governance responsibilities.

Who?	Governance responsibilities	Line of defence
Service and Project Managers	<ul style="list-style-type: none"> Responsible for identifying, assessing and appropriately documenting risk within their area. Responsible for managing their risks in line with the Risk Management Strategy and escalating risk where needed. 	First line
Heads of Service	<ul style="list-style-type: none"> Responsible for the effective leadership and management of risk in their service area to meet Corporate Plan aims and priorities in line with the Risk Management Strategy. Be a champion for the Risk Management Strategy and encourage open and honest reporting. 	First line
Directorate Leadership Teams	<ul style="list-style-type: none"> Responsible for the strategic leadership and management of risk in their directorate to meet Corporate Plan aims and priorities in line with the Risk Management Strategy. Constructively review and challenge the risks involved in decision making for their directorate. Be a champion for the Risk Management Strategy and encourage open and honest reporting. 	Second line
Corporate Leadership Team	<ul style="list-style-type: none"> Responsible for the strategic leadership and management of risk across the organisation, ensuring an embedded, council-wide risk management culture. Responsible for owning and managing the Strategic Risk Register in line with the Risk Management Strategy. Ensure members receive regular risk management updates. 	Second line
Internal audit	<ul style="list-style-type: none"> Provide evaluation and challenge on the strategy and on risk registers 	Third line
Executive members	<ul style="list-style-type: none"> Regularly consider and challenge the risks involved in achieving Corporate Plan aims and priorities. 	Third line
Audit Committee	<ul style="list-style-type: none"> Provide guidance and assurance on the development and implementation of the Risk Management Strategy Approve the Risk Management Strategy. Regularly consider and challenge the risks involved in achieving Corporate Plan aims and priorities 	Third line
Scrutiny Panels	<ul style="list-style-type: none"> Regularly consider and challenge the risks involved in achieving Corporate Plan aims and priorities 	Third line

Information and expertise page: gives the fourth aim and how we will achieve it (information and expertise)

Information and expertise

Risk management is collaborative, is informed by the best available information, and is continually improved through learning and experience

Our risk management framework is structured in line with best practice guidance from [HM Treasury](#) and we are committed to reviewing any new best practice guidance during the annual refresh of the strategy.

This risk management strategy is supported through a toolkit which includes the following:

- Risk identification tool
- Risk management matrix
- Escalating risk
- Decision making and governance guidance
- The Strategic Risk Register
- The Directorate Risk Registers

The strategy is also supported by the following training materials:

- An overview of managing risk as part of business planning and as part of the PMO.

Our values

As we manage risk throughout the organisation we will always do so in line with our values:



End page



Supporting toolkit links:

- Risk toolkit (within the PMO)
- Decision making and governance guidance
- The Strategic Risk Register
- The Directorate Risk Registers

Strategy links:

- Corporate Plan
- Climate Emergency Strategy
- Health and Wellbeing Strategy

Questions:

Business.planning@n-somerset.gov.uk

